

Enhanced Security

Increasing *Control* of
Your Operations with
Merit Solutions



Overview

Enhanced Security increases Microsoft Dynamics™ GP system security control while reducing management of user access based on password and login characteristics. Enhanced Security extends SQL Server 2005 security with login controls, including time of day and expiration date controls established at the system, user class or user level. Enhanced Security also extends Dynamics GP security to enable strong passwords with reset intervals.

Features You Need

Increase Control

- Set time-of-day system login access rules.
- Set automatic login and User ID expiration dates for specific users or user classes.
- Specify length, mixed case, alpha numeric and symbols for passwords.
- Enforce separate and distinct passwords in combination with the User ID.
- Set the number of days between password changes.
- Enforce repeat frequency rules.

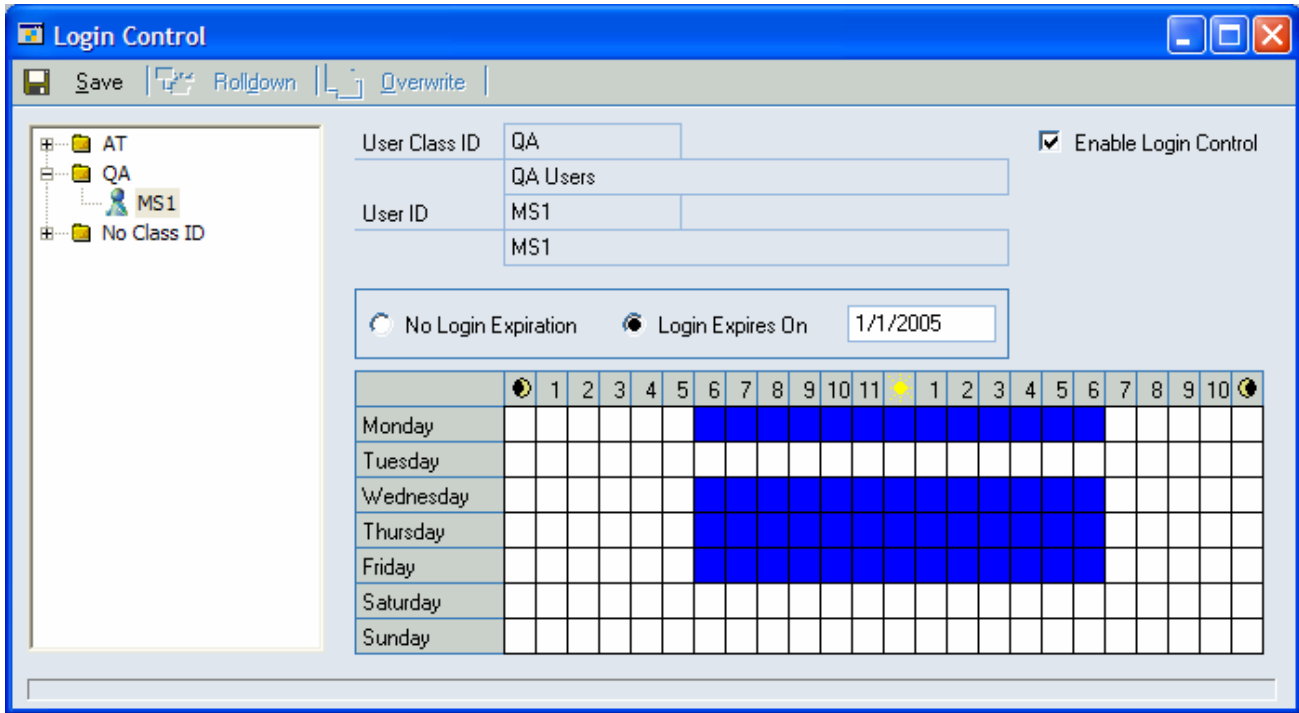
Effortless Change

- Roll down capability allows changes to be made to a group of users at the same time.

Maintain Compliance

- Enables compliance with FDA 21CFR Part 11 and Sarbanes-Oxley Section 404 when used together with Microsoft Dynamics GP Audit Trails.





The days and times Microsoft Dynamics GP users are allowed to access the system are maintained in the Login Control window. The settings shown in the above window indicate User ID “MS1” has access to the system every day of the week except Tuesday between 6 AM and 6 PM. The password is set to expire on January 1, 2005.

Other Products of Interest

- Advanced Lot Management
- Advanced Serial Management
- Validation Templates
- Sales Controls
- Adverse Event Reporting
- Sarbanes-Oxley Solutions
- Production Workbench
- Quick Planner
- Microsoft Dynamics GP Audit Trails
- Microsoft Dynamics GP Electronic Signatures

Contact Us

Merit Solutions, Inc.

1749 S. Naperville Rd., Suite200

Wheaton, IL 60187

www.meritsolutions.com

Phone: 630•614•7133

Fax: 630•614•7141

Email: info@meritsolutions.com

